

Cheshire East Health and Wellbeing Board Agenda

Date: Tuesday 24th November 2020
Time: 2.00 pm
Venue: Virtual Meeting

How to Watch the Meeting

For anybody wishing to view the meeting live please click in the link below:

[Click here to watch the meeting](#)

or dial in via telephone on 141 3321 5200 and enter Conference ID 646082955# when prompted.

The agenda is divided into 2 parts. Part 1 is taken in the presence of the public and press. Part 2 items will be considered in the absence of the public and press for the reasons indicated on the agenda and at the top of each report.

Please note that Part 1 items of Cheshire East committee are recorded and the recordings are uploaded to the Council's website.

PART 1 – MATTERS TO BE CONSIDERED WITH THE PUBLIC AND PRESS PRESENT

1. **Apologies for Absence**
2. **Declarations of Interest**

To provide an opportunity for Members and Officers to declare any disclosable pecuniary and non-pecuniary interests in any item on the agenda.

3. **Minutes of Previous Meeting** (Pages 3 - 8)

To approve the minutes of the meeting held on 22 September 2020.

For requests for further information

Contact: Rachel Graves

Tel: 01270 686473

E-Mail: rachel.graves@cheshireeast.gov.uk with any apologies

4. **Public Speaking Time/Open Session**

In accordance with paragraph 2.32 of the Committee Procedural Rules and Appendix 7 to the Rules a period of 10 minutes is allocated for members of the public to address the meeting on any matter relevant to the work of the body in question. Individual members of the public may speak for up to 5 minutes but the Chairman or person presiding will decide how the period of time allocated for public speaking will be apportioned where there are a number of speakers.

Members of the public wishing to ask a question or make a statement at the meeting should provide at least three clear working days' notice in writing and should include the question with that notice. This will enable an informed answer to be given.

5. **Cheshire and Merseyside Health and Care Partnership** (Pages 9 - 18)

To receive a presentation on the Cheshire and Merseyside Health and Care Partnership.

6. **Safeguarding Adults Board Annual Report 2019-2020** (Pages 19 - 36)

To consider the Safeguarding Adults Board Annual Report 2019-2020.

7. **'Test, Trace, Contain, Enable' Update**

To receive a verbal update on 'Test, Trace, Contain, Enable'.

8. **Cheshire East Integrated Care Partnership Update** (Pages 37 - 38)

To receive an update on the Cheshire East Integrated Care Partnership.

9. **Cheshire East Place Partnership update** (Pages 39 - 42)

To receive an update on the Cheshire East Place Partnership.

CHESHIRE EAST COUNCIL

Minutes of a virtual meeting of the
Cheshire East Health and Wellbeing Board
held on Tuesday 22nd September 2020

PRESENT**Voting Members**

Councillor Sam Corcoran, Cheshire East Council (Chairman)
Councillor Kathryn Flavell, Cheshire East Council
Councillor Laura Jeuda, Cheshire East Council
Mark Palethorpe, Cheshire East Council
Dr Matt Tyrer, Cheshire East Council
Clare Watson, NHS Cheshire CCG
Dr Andrew Wilson, NHS Cheshire CCG (Vice Chairman)
Louise Barry, Healthwatch Cheshire
Steven Michael, Cheshire East Health and Care Place Partnership
John Wilbraham, Cheshire East Integrated Care Partnership
Dr Patrick Kearns, Cheshire East Integrated Care Partnership

Non-Voting Members

Lorraine O'Donnell, Cheshire East Council

Associate Non-Voting Members

Councillor Jill Rhodes, Cheshire East Council
Councillor Janet Clowes, Cheshire East Council
Frank Jordan, Cheshire East Council
Superintendent Peter Crowcroft, Cheshire Constabulary
Chris Hart, Cheshire East Social Action Partnership
Caroline Whitney, CVS Cheshire East

Cheshire East Council Officers/Others

Guy Kilminster, Cheshire East Council
Sheila Woolstencroft, Cheshire East Council
Alex Jones, Cheshire East Council
Shelly Brough, Cheshire East Council
Vicky Howarth, Cheshire East Council
Rachel Graves, Cheshire East Council
Madeleine Lowry, Cheshire and Wirral Partnership NHS Trust
Jamaila Tausif, NHS Cheshire CCG

10 APOLOGIES FOR ABSENCE

Apologies for absence were received from Mike Larkin, Cheshire Fire and Rescue Service.

11 DECLARATIONS OF INTEREST

Councillor S Corcoran declared a non-pecuniary interest by virtue of his wife being a GP.

Dr Patrick Kearns declared that he was a GP partner in a practice in Knutsford, the Chair of, and a shareholder, in Vernova Healthcare CIC and that his wife worked for the Cheshire and Wirral Partnership.

12 MINUTES OF PREVIOUS MEETING

RESOLVED:

That the minutes of the meeting held 28 July 2020 be confirmed as a correct record.

13 PUBLIC SPEAKING TIME/OPEN SESSION

There were no public speakers.

14 PREVENTING SUICIDE IN CHESHIRE & MERSEYSIDE

The Board received a presentation on the work undertaken by Champs in relation to preventing suicides in Cheshire and Merseyside.

The Cheshire and Merseyside Health Collaborative had published their 'No More Suicide' strategy plan in 2015 and, following a review in 2017, had decided that work should be scaled up and actions accelerated to reduce suicides and work towards 'Living Works' accreditation to become a Suicide Safer Community as a region. The presentation to the Board outlined the steps which had been taken to meet the actions within the plan.

RESOLVED:

That the presentation be received.

15 ESTABLISHMENT OF A REDUCING INEQUALITIES COMMISSION

The Board considered a report seeking to establish a Reducing Inequalities Commission, as a sub group of the Health and Wellbeing Board, which would have the remit to lead and co-ordinate work across Cheshire East that focused upon reducing the inequalities experienced by residents of the borough.

Within the Cheshire East Place Health and Care Partnership Five Year Plan and the Joint Health and Wellbeing Strategy, the need to address the inequalities evident through the Tartan Rug was a priority. Additionally, Covid-19's impact on those facing these same inequalities had led to NHS

England and Improvement making addressing the inequalities a priority in the Covid-19 Phase 3 recovery planning.

Dr Matt Tyrer would take the lead in the establishment of the Commission and nominations for membership would be sought from partners and other organisations that had a role to play or an interest in reducing inequalities across the borough.

RESOLVED:

That the Cheshire East Health and Wellbeing Board agree to the establishment of a Reducing Inequalities Commission, as a sub-group of the Health and Wellbeing Board, with the remit to lead and co-ordinate work across Cheshire East that focuses upon reducing the inequalities experienced by residents of the borough.

16 BETTER CARE FUND END OF YEAR REPORT 2019 - 2020

The Board considered a report on the performance of the Better Care Fund, including the Improved Better Care Fund in 2019/20.

The end of year report formed part of the monitoring arrangements for the Better Care Fund and included an overview of the scheme, patient stories, the financial income and expenditure, Better Care Fund metrics and the next steps for the programme,

RESOLVED:

That the Better Care Fund programme performance for 2019/20 be noted.

17 CHESHIRE EAST CARERS HUB

The Board considered an update on the progress, performance and key risks in relation to the Cheshire East Carers Hub Service.

The report detailed the Service's achievements for 2019/20 against the five key priorities of the Carers Strategy Delivery Plan 2018. It also outlined the effects of Covid-19 on the service and number of referrals it received, and the action taken to support the carers registered with the Hub.

RESOLVED: That the Board

- 1 note the progress of the Cheshire East Carers Hub with the single carers' assessment route and the planned review and service engagement and consultation;
- 2 note the contribution of the Cheshire Carers Hub against the five key priorities of the Carers Strategy Delivery Plan 2018; and

- 3 note the response of the Cheshire East Hub during Covid-19.

18 **SPECIAL EDUCATIONAL NEEDS AND DISABILITY (SEND) IMPROVEMENT UPDATE**

The Board considered an update on progress against the Cheshire East SEND Written Statement of Action, produced following the Ofsted and CQC inspection in March 2018.

The appendix to the report detailed the progress and actions that had been taken to address the significant weakness relating to the two areas identified: Area 1 – the timeliness, process and quality of education, health and care plans and Area 2 – the lack of an effective autism spectrum disorder pathway and unreasonable waiting times.

Ofsted and the CQC were due to carry out a re-visit before the end of April 2020 but this had been suspended due to the Covid-19 pandemic. It had been announced that from autumn 2020 Ofsted and the CQC would be conducting a limited number of visits to local areas regarding their SEND arrangements and preparations were continuing for the re-visit.

RESOLVED: That the Board

- 1 note the progress to date against the SEND Written Statement of Action and preparations for the SEND re-visit; and
- 2 endorse the progress report documents in the Appendix to the Report.

19 **'TEST, TRACE, CONTAIN, ENABLE' UPDATE**

Dr Matt Tyrer gave an update on the Test, Track, Contain and Enable system.

He reported that over the last fortnight the situation had been rapidly changing, with the number of positive covid-19 cases starting to rise. Cheshire East had at present the lowest numbers in the Cheshire and Merseyside region. The data being received was being monitored and investigation being undertaken to see if there were patterns, trends and clusters relating to particular localities, venues and workplaces. So far there had not been a need to deploy any additional testing capacity in Cheshire East.

A communications plan had been developed in conjunction with the NHS and other local authorities across the region so that a coherent approach to messages being sent out was taken.

The work of the Local Resilience Forum and Strategic Coordination Group had been stepped back up and an Action Plan agreed.

An announcement was expected from the Government shortly outlining further restrictions which would come into effect and these were expected to include a further reduction in opening hours in the hospitality sector with closure at 10 pm, implementation of the rule of six and increased use of face masks.

RESOLVED:

That the verbal update be noted.

20 CHESHIRE EAST PLACE PARTNERSHIP UPDATE

The Board received an update on the Cheshire East Place Partnership.

It was reported that the Partnership Board had met on 2 September and was looking at how to work to manage the recovery of services at the same time as delivering services and planning for a second spike of Covid-19. Work was continuing with the development of the integrated care partnership and new ways of commissioning. There were still financial challenges to services, which Covid-19 had added to, and new ways of working were being introduced.

RESOLVED:

That the update be noted.

The meeting commenced at 2.00 pm and concluded at 3.50 pm

Councillor S Corcoran (Chairman)

This page is intentionally left blank

Overview of the Partnership

Alan Yates

	a locality within Cheshire and Merseyside based on 9 Local Authority boundaries. Place is where local meets strategic; the default for integrated working
Partnership'	9 LAs, 9 CCGs, 19 provider trusts (inc. NWAS), VSNW + Partnership Executive
	Partnership Board + Partnership Assembly
System'	the Partnership + those bodies within Cheshire & Merseyside that may have an interest, impact or influence (including PCNs)
Partnership Assembly'	senior stakeholders equivalent to shareholders who hold the Partnership Board to account and provide the context in which the Board works
Partnership Board'	the entity that oversees the Partnership, chaired by Alan Yates
Partnership Executive'	the team led by Jackie Bene

The Cheshire and
Merseyside Health
and Care
Partnership is
based on the nine
Places



t everyone in Cheshire and Merseyside
a great start in life, and get the support
ed to stay healthy and live longer.

Mission

We will tackle health inequalities and improve
the lives of our poorest fastest. We believe we
can do this best by working in partnership.

Aims

1. Improve the health and wellbeing of local pe
2. Pursue a less illness-based, more health &
wellbeing model

Partnership Assembly

Partnership Board

Partnership Coordination Group

Patients
and public



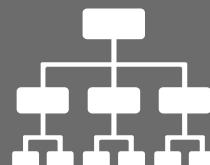
services



experience & insight



Partner
organisations



strategy & coordination



Know-how & data



Partnersh

Executive



Partnership Assembly	Partnership Board	Partnership Executive	Partnership Coordination Group
The Partnership's representative or democratic council, akin to a shareholder AGM	The governing body of the Partnership	The team that executes the strategic plan of the Partnership	An ad hoc operational group to coordinate efforts in response to C-19
To scrutinise the Partnership Board & set the tone for the whole	To set the strategic framework of the Partnership & monitor performance against it; gives appropriate authority for expenditure & policy decisions	Both to deliver & help Partners to deliver the vision & mission of the Partnership	To improve efficiency of the C-19 response, & provide additional resources
As the body of last recourse. Provides the context in which the Board works	Accountable to the Partnership Assembly. Holds the Partnership Executive to account	Executive arm accountable to the Partnership Board	Temporary arm of the Partnership Board
Partnership Board, reps of all Partner orgs, stakeholders (open to public as auditors not contributors)	Chair, representation from LAs, CCGs, Trusts, VCSE, Public Health, PCNs, NHSE/I & Partnership Executive	Chief Officer, Dir Finance, Dir Workforce, Dir Strategy & System Development, Dir Performance & Delivery, Dir Comms & Engagement	As per approved constitution

1. How far is people's health improving?

1	2	3	4	
---	---	---	---	--

2. How far are health inequalities reducing?

1	2	3	4	
---	---	---	---	--

3. How strategic are we being?

1	2	3	4	
---	---	---	---	--

4. How effectively are we collaborating?

1	2	3	4	
---	---	---	---	--

5. How much value are we adding?

1	2	3	4	
---	---	---	---	--

6. How smart are we being with money?

1	2	3	4	
---	---	---	---	--

7. How well are we learning?

1	2	3	4	
---	---	---	---	--

8. How usefully are we impacting on C-19?

1	2	3	4	
---	---	---	---	--

The Partnership Assembly is convened in order to:

- Provide a democratic forum for the Partnership
- Represent the wider C&M community
- Hold the Partnership Board to account
- Critique the decision making process
- Insist on transparency & blow the whistle as necessary
- Put the public good first
- Act as the conscience of the Partnership

Thank you

This page is intentionally left blank



CHESHIRE EAST HEALTH AND WELLBEING BOARD
Reports Cover Sheet

Title of Report:	Safeguarding Adults Board Annual Report – 2019-2020
Date of meeting:	24 th November 2020
Written by:	Sandra Murphy
Contact details:	Sandra.murphy@cheshireeast.gov.uk
Health & Wellbeing Board Lead:	Mark Palethorpe

Executive Summary

Is this report for:	Information <input checked="" type="checkbox"/>	Discussion <input type="checkbox"/>	Decision <input type="checkbox"/>
Why is the report being brought to the board?	The Safeguarding Adults Board is required to link with other Boards and to share its Annual Report and activity.		
Please detail which, if any, of the Health & Wellbeing Strategy priorities this report relates to?	Creating a place that supports health and wellbeing for everyone living in Cheshire East <input type="checkbox"/> Improving the mental health and wellbeing of people living and working in Cheshire East <input type="checkbox"/> Enable more people to live well for longer <input type="checkbox"/> All of the above <input checked="" type="checkbox"/>		
Please detail which, if any, of the Health & Wellbeing Principles this report relates to?	Equality and Fairness <input type="checkbox"/> Accessibility <input type="checkbox"/> Integration <input type="checkbox"/> Quality <input type="checkbox"/> Sustainability <input type="checkbox"/> Safeguarding <input checked="" type="checkbox"/> All of the above <input type="checkbox"/>		
Key Actions for the Health & Wellbeing Board to address. Please state recommendations for action.	The Safeguarding Adults Board request that the Health and Well Being Board notes the contents of the Report and shares Key Messages with relevant Bodies.		
Has the report been considered at any other committee meeting of the Council/meeting of the CCG board/stakeholders?	Overview and Scrutiny – October 2020		

Has public, service user, patient feedback/consultation informed the recommendations of this report?	Work undertaken with and by Service Users during 2019-20 is referenced within the Annual Report
If recommendations are adopted, how will residents benefit? Detail benefits and reasons why they will benefit.	The purpose of the Report is to raise awareness about Adult Safeguarding and to demonstrate how individuals and organisations are working together to prevent and stop abuse and neglect, whilst promoting choice, control and well being for individuals affected by abuse.

1 Report Summary

- 1.1 The Care Act 2014 places a Legal Duty on Local Authorities to have a Safeguarding Adults Board. The purpose of the Board is to seek assurances from all organisations that they have policies, procedures and training in place to spot indicators of abuse and staff can fulfil their statutory duties in response.
- 1.2 Each Safeguarding Adults Board must produce a Strategic Plan, an Annual Report and facilitate Safeguarding Adults Reviews.
- 1.3 This is the Safeguarding Adults Board for 2019-20. It includes data about referral numbers, Section 42 Enquiries and Outcomes for individuals affected by abuse or neglect. It also evidences focussed Board sessions on the key issues of Modern Slavery, Sexual Abuse and Organisational Abuse, as well as including reports from the four subgroups of the Board and Frontline Visits.
- 1.4 It is important to recognise how the Board has contributed to the Prevention Agenda by delivering 1002 Basic Safeguarding Awareness Training Sessions to Care and Voluntary Sector Providers, as well as noting the ongoing work with Service Users to ensure that we hear the Voices of those affected by Abuse or Neglect.
- 1.5 It should be noted that this report was based on Pre Covid 19 activity in 2019-2020, however, the five priorities of the Board do reflect the current and future impact of the Corona Virus pandemic.

2 Recommendations

- 2.1 The Board has set 5 key priorities in line with the Strategic Plan and in the context of Covid 19:
 - The SAB will continue to fulfil its legal duties during the Pandemic
 - The SAB will continue to promote Making Safeguarding Personal
 - The SAB will continue to link with other Boards, particularly the Safer Cheshire East Partnership, to consider and address cross cutting themes
 - The SAB will seek assurances and recognise the hard work of organisations are undertaking to deliver safe services
 - The SAB will continue to promote positive practice

3 Reasons for Recommendations

- 3.1 The SAB recognises that Adults at Risk, are often the most vulnerable members of society, often dependent on others to provide care and support. They are victims because of age or disability and can also be subject to control and coercion. Likewise, perpetrators are also seeking new ways to exploit victims, giving rise to more complex safeguarding situations and challenges for Frontline Staff.
- 3.2 The SAB is supporting staff and organisations to work together during the Pandemic to effectively share information and coordinate timely and proportionate responses to Safeguarding Concerns.

4 Impact on Health and Wellbeing Strategy Priorities

- 4.1 The Annual Report evidences how the Safeguarding Adults Board is mirroring the principles and priorities of the Health and Wellbeing Board. The case studies within the report describe the impact of abuse, and how agencies have worked with individuals not only to reduce risk, but also to promote choice, control and wellbeing.

5 Access to Information

- 5.1 The background papers relating to this report can be inspected by contacting the report writer:

Name: Sandra Murphy

Designation: Head of Adult Safeguarding

Tel No: 07825 145 464

Email: Sandra.murphy@cheshireeast.gov.uk

This page is intentionally left blank



Cheshire East Safeguarding Adults Board

Annual Report

2019-2020



OFFICIAL

Introduction – Forward by Geoffrey Appleton, Independent Chair



I have great pleasure in introducing what is now my third annual report as the Independent Chair of the Safeguarding Adults Board for Cheshire East which I hope you will find helpful and informative. We ended our year as Covid-19 was impacting on every element of our daily life and lockdown prevented us meeting as Board at the end of the financial year. Next year's annual report will go into more detail and reflection and who knows what a new normal will then look like. Nevertheless, work continued to support adult safeguarding throughout March - but more of that in our next annual report.

I mentioned last year that we had introduced themed boards with an opportunity to have an in depth examination and understanding of an area of our work. The report highlights the areas and I would say that each one has provided so much learning for individual members and partners that has shaped, for the better, service delivery and practice. I would commend the work done by the sub groups and thank the chairs of those subgroups for such valuable work. One area to highlight is the work of our Adult Safeguarding Training Officer and he has made such a positive impact in his work delivering training on safeguarding to care/nursing home and voluntary sector providers, and they have responded so well to him and his work and this in turn has led to providers themselves identifying their learning and development needs and a greater sense of trust and openness.

The year has also seen a much greater sense of synergy and sharing of intelligence between the Care Quality Commission and the Quality Commissioning and Contracting leads and examples were given at our January Board where that sharing was leading to more effective and timely interventions with providers where there were concerns which in turn led to improvements and solutions. You will read in the report the work on Modern Slavery and the fact that such work is required is a timely reminder that slavery is not something to be studied in history and condemned but rather a new way of some people exploiting fellow citizens. I am pleased to report that the partners work tirelessly to respond to this modern day scourge on our society. A similar approach is found in partners response to County Lines where young adults and children are exploited by career criminals who are leeches on society and cause so much damage to those they use. The fact that they describe their foot soldiers as BICS (disposable razors) says everything about their methods. There is now much more understanding of the warning signs in society and training of front line workers such as train companies to be alert to possible examples. I am pleased that our Board is working more closely with both the Children's Safeguarding Partnership and the Safer Cheshire East Partnership which is making all of our work more effective and is avoiding duplication.

I want to place on record my thanks to all members of the Board for their continued support and commitment to the work of adult safeguarding particularly at a time when resources are ever more stretched. I also want to thank Debbie Kirkup, our Business Administrator who retired at the end of 2019 for all her hard work and dedication to the work of the Board and to wish her well in her retirement.

Geoffrey

This report will be published on our website www.stopadultabuse.org.uk for all partners and members of the public to access. As required by the Care Act, this report will also be shared with the Chief Executive Officer and Lead Member at Cheshire East Council as well as the Police and Crime Commissioner, Healthwatch Cheshire East plus Cheshire East Health and Wellbeing Board.

OFFICIAL

Cheshire East Safeguarding Adults Board (CESAB)

The overarching purpose of the Cheshire East Safeguarding Adults Board (CESAB) is to help and safeguard adults with care and support needs. It does this by:

- ***assuring itself that local safeguarding arrangements are in place as defined by the Care Act 2014 and statutory guidance***
- ***assuring itself that safeguarding practice is person-centred and outcome-focused***
- ***working collaboratively to prevent abuse and neglect where possible***
- ***ensuring agencies and individuals give timely and proportionate responses when abuse or neglect have occurred***
- ***assuring itself that safeguarding practice is continuously improving and enhancing the quality of life of adults in its area.***

CESAB leads adult safeguarding arrangements across Cheshire East and oversees and coordinates the effectiveness of the safeguarding work of its member and partner agencies. The Board is responsible for developing and actively promoting a culture with its members, partners and the local community that recognises the values and principles contained in 'Making Safeguarding Personal'. The Board also covers a range of issues which can contribute to the wellbeing of its community and the prevention of abuse and neglect, and works closely with the Safer Cheshire East Partnership, the Cheshire East Children's Safeguarding Partnership as well as the Cheshire East Domestic Abuse Partnership

CESAB has three core duties;

- ***To develop and publish a strategic plan setting out how we will meet our objectives and how our member and partner agencies will contribute***
- ***publish an annual report detailing how effective our work has been***
- ***commission safeguarding adults reviews (SARs) for any cases which meet the criteria for these.***

Membership – Cheshire East Council are responsible for the establishment of CESAB. The Care Act 2014 specifies that there are three core members: the local authority, the clinical commissioning groups (CCGs), and the police. The Safeguarding Adults Board is chaired by an Independent Chair and as well as the above statutory partners membership to the Board includes representation from the following agencies: housing, local Hospital Trusts, Cheshire and Wirral Partnership NHS Trust, North West Ambulance Service, the local prison plus probation trusts, CQC, Healthwatch Cheshire East and the voluntary and faith sector.

The work of our members All Board partners submitted Single Agency Reports to CESAB highlighting their agency's Safeguarding work over 2019/20 and their future plans/strategic directions. Highlights from this information have been incorporated into this multi-agency report but the full single-agency statements will be available on our website.

The work of the Board is driven by its vision that People in Cheshire East have the right to live a life free from harm, where communities:

- have a culture that does not tolerate abuse
- work together to prevent abuse
- know what to do when abuse happens

What is abuse -

Abuse can happen anywhere including at home, in care homes, at hospital or in public. It could be a single act or can take place over a long period of time. Some adults are more at risk of abuse than others as they are not able to protect themselves from abuse. This could be because they are elderly, disabled or rely on others to meet their care needs.

Abuse could be:

- physical
- sexual
- neglect and self-neglect
- financial
- psychological
- domestic abuse
- human trafficking
- modern day slavery
- organisational



2019/20 Themes

CESAB meets quarterly and themes each board meeting. Over 2019/20 the board focussed on the following themes –

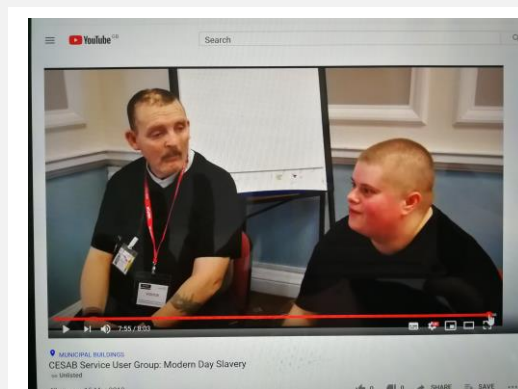
- **Modern Slavery**
- **Sexual Abuse**
- **Organisational Abuse**

Unfortunately, the Board meeting planned for March 2020 had to be cancelled due to the Covid-19 pandemic. The annual Spring Conference was postponed for the same reason. The Board will meet remotely in July 2020 and the Safeguarding Adults Conference will be rescheduled as soon as government advice states that it is safe to do so.

Modern Slavery -

Quarter One's meeting focused on Modern Slavery. The themed meeting started with a video made by the Service User Sub-group in which members of CESAB's Service User Group put questions to a Social Worker who had recently dealt with a case that involved modern slavery. This video has since been used at training events

The Chair of the Cheshire Anti- Slavery Network also gave a presentation to the Board and Cheshire Police presented a PowerPoint about County Lines and Modern Day Slavery in Cheshire East.



Slavery Case Examples from Cheshire Police -

1. In 2012, workers from Lithuania were kept in appalling conditions in and subject to a climate of fear, threats and violence whilst working to provide eggs to some of the UK's most prominent retailers and restaurants. The workers were used to catch chickens on sites all over the UK. This labour provider subjected migrant workers to debt bondage, giving them no option to leave the squalid house in which they were forced to live and sleep. Their mattresses were infested with bed bugs and fleas. Two people were arrested for human trafficking offences and reportedly perpetrated one of the worst cases of exploitation ever uncovered in the food supply chain.
2. Four men from the Czech Republic were offered work in the UK. When they arrived, their documents were taken from them and they were forced to live in a house together, in squalid conditions. Every day, they were driven to work in a bread factory. The gang master who had seized their documents registered all four men with the worker's registration scheme and forced the men to pay all their wages to him. When one of them began to question his lack of wages, he was chained to a radiator and beaten. He was also burned with cigarettes. The four men eventually escaped the situation when, on the journey travelling in the back of a van, one man feigned illness in order to make the driver stop. When the doors were opened, the four ran in different directions and escaped

So, What Next? What is Cheshire East Safeguarding Adults Board doing about Modern Day Slavery?

Modern Day Slavery was only added as a category of abuse within Adult Safeguarding in the Care Act 2015. The Board is, therefore, keen to continue its understanding on the nature of Modern Day Slavery within Cheshire East and ensuring that all staff are aware of the issues around Modern Day Slavery through training. There is a dedicated section on the Board's webpages and the Board will continue to link with Cheshire Police with their annual Modern Day Slavery social media campaign. Police in Crewe have set up pioneering Exploitation Unit to tackle crime gangs and traffickers. The exploitation unit is the first of its kind in Cheshire and deals specifically with crimes which affect vulnerable people, such as child exploitation, sexual exploitation and modern day slavery. The Board will receive updates on its progress.

Sexual Abuse -

Quarter two focused on Sexual abuse. The Quality and Performance Sub-group had conducted a multi-agency audit of Adult Safeguarding cases that centred around sexual abuse. This was a fully comprehensive audit that gave the Board full assurance that the cases in Cheshire East could evidence positive information sharing and multi-agency working. Two Social Workers from Cheshire East Council also attended the Board to present case studies they have dealt with to show the Board examples of the type of enquiries they deal with.

CASE EXAMPLE - The Fire Service became worried after visiting the property of an elderly woman who lived with her son. She appeared malnourished, dirty and very agitated. They referred the case to Adult Social Care

The Social Worker discovered that the woman had been repeatedly sexually assaulted by her son. The house was found to also be dirty, with barely any food and bills had gone unpaid.

With the support of the Police, Social Worker and the Housing Provider, the lady decided move to sheltered accommodation where she can live independently but also with onsite support and assistance if needed.

So, What Next? What is Cheshire East Safeguarding Adults Board doing about Sexual Abuse?

As a direct outcome of the Adult Sexual Abuse themed meeting information regarding the partnership between St Mary's Sexual Abuse Referral Centre (SARC) and the Rape & Sexual Abuse Support Centre (Cheshire & Merseyside) has been briefed to the Adult Safeguarding Practitioners Forum.

The Rape & Sexual Abuse Support Centre (Cheshire & Merseyside), is a community based specialist sexual violence organisation (RASASC). St Mary's SARC offers forensic and immediate medical support for people of any age and gender who have been raped or sexually assaulted. RASASC go on to provide aftercare support, including help through the criminal justice system, ongoing health and social support, and specialist counselling. RASASC have bases in Crewe and Macclesfield and will visit a place of the victim's choice. Individuals do not always have to go through the Police to access the service.

Adult Safeguarding Practitioners are also encouraged to access the training commissioned by Cheshire East's Safeguarding Children Partnership around sexual violence, from RASASC. This course covers the work of the SARC and RASASC and is appropriate for both adult and children's safeguarding practitioners.

In 2019/20 the Domestic Abuse Hub secured the involvement of Adult Social Care in the eMARAC process (an online system to look at Domestic Abuse risks as a multi-agency). This has developed co-ordinated work to safeguard adults at risk from Domestic Abuse. Following the themed board, CESAB and the Domestic Abuse Partnership have also collaborated on a critical report into complexity to provide evidence for changing how we respond to the most chaotic and disadvantaged service users. Work has also begun to support people and families experiencing dementia who are abused in a family or relationship context.

Organisational Abuse -



The third quarter Board focussed on Organisational abuse. The Board received presentations from The Adult Safeguarding Providers Team, The Quality and Audit Team, The Safeguarding Data Officer, The Safeguarding Training Officer and The Care Quality Commission (CQC). The Board heard how Organisational Abuse includes poor care practice within an institution or specific care setting like a health provider or a care home. This may range from isolated incidents to continuing ill-treatment. Organisational abuse may also occur as a result of poor practice from a care provider, including services provided in an individual's own home. CQC gave a case example and highlighted how the Local Authority, GP practice, the Clinical Commissioning Group, the Police, and, North West Ambulance all worked together to ensure a positive outcome for service users.

Examples of Organisational abuse may include:

- failure to respect or support a person or group's right to independence, dignity or choice
- lack of person centred care planning or a ritualised care routine
- no flexibility in bedtimes or getting up or deliberately waking someone up
- inappropriate confinement, restraint or restriction
- lack of personal clothing or possessions
- stark living areas, deprived environment or lack of stimulation
- lack of choice in decoration or other aspects of the environment
- lack of choice in food or menus or menu planning
- unnecessary involvement in personal finances by staff or management
- inappropriate use of nursing or medical procedures, e.g. using un-prescribed medication
- inappropriate use of power or control

So, What Next? What is Cheshire East Safeguarding Adults Board doing about Organisational Abuse?

In the 12 months prior to this themed Board, Cheshire East Council formed the Adult Safeguarding Providers Team, this team works alongside the Quality & Audit team. It has been noted that since these two teams have been working together large investigations are decreasing and assurance is provided in a timely manner. The Independent Chair is going to meet with these two teams and invite them to present a progress report at a future CESAB meeting. Regular data from this team will also be submitted to the Performance and Quality Sub-group.

Sub-groups of the Cheshire East Safeguarding Adults Board

There were four sub groups reporting to the SAB during 2019/20 –

- **The Service User Group**
- **The Serious Case Group**
- **The Learning & Development Group**
- **The Quality & Performance Group.**

The Board also has a **Business Management Group** to provide strategic leadership to the Board, and a **Statutory Partners Group** to ensure all statutory partners are meeting their legislative duties under the Care Act 2014.

The Board also has a task and finish **Communications/Prevention Group** to plan communication and engagements from the Board to both the public and partners. The Board also has a task and finish **Policy and Procedures Group** that meets if there's any policy reviews or changes needed. 2019/20 saw the introduction of two new policies, *the North West ADASS PIPOT Policy*, and, *the LGA/ADASS Framework for S42 Making Decisions on the Duty to carry out safeguarding Adult Enquiries*, both of which have been fully adopted by board partners and are available on our website.

The Service User Group



The CESAB Service User Subgroup provides the Board with a perspective and challenge from individuals who have experience of adult safeguarding and/or care and support services in Cheshire East. The group have been key in the development of Health and Social Care policy and practice across Cheshire East. Over 2019/20 the group has linked with the Local Government Association sharing their experiences of Adult Safeguarding to a national audience. The Service User Group were keen to ensure that the group was diverse and representative of adults in Cheshire East, during 2019/20 they wanted to reach people who were least able to participate in the group and worked with an Arts Worker to engage with people that live in a care home settings. More details from this project can be found later in this report.

The Serious Case Sub Group



The Serious Case Group is chaired by Cheshire Police, and is responsible for commissioning and monitoring Safeguarding Adult Reviews (SARs) and other multi-agency learning reviews in cases where there have been poor outcomes for service users. This is to ensure that lessons are learned to improve partnership working. In 2019/20 the Board did not hold a formal SAR due to all referrals not meeting the criteria, but two reflective reviews/learning events were held due to these cases warranting a wider formal multi-agency review process. Both cases were identified as there was significant learning to be gained across the multi-agency network, but the criteria for a formal SAR was not met. Learning from these events was shared at the Safeguarding Practitioners Forum and the Safeguarding Managers Network.

Quality & Performance sub group

This group is chaired by the NHS Clinical Commissioning Group. The work of the Quality and Performance subgroup is to establish whether Board standards of safeguarding activity across the partnership are being met, to support the development of well performing safeguarding quality assurance systems and to promote best practice across the partnership. The subgroup carries out the work by undertaking or overseeing multi-agency audits, monitoring action plans, providing performance information on activity, and giving advice or making recommendations to the Board. Throughout 2019/20 the group worked within the Board's themes of Modern Slavery, Sexual abuse and Organisational abuse, ensuring themed analysis was available at each CESAB meeting. The group also oversees an annual MSP self-assessment process from all Board partners. An overarching Safeguarding data report is provided on page 12 of this document.



Learning & Development Sub group



This group is chaired by the Local authority. The subgroup meets regularly to plan and review the programme of training and partner agency involvement. It aims to be a dynamic group working together to promote effective multi-agency training practice. The Training subgroup is accountable to the Board, the members of which all have a adult safeguarding training brief within their own agencies, this group ensures all training across the partnership is at a set standard and that there is a commitment to good inter-agency learning development practice. Throughout 2019/20 it has overseen the work of both the Safeguarding Training Officer and the Basic Awareness Modern Day Slavery Training

Safeguarding Adults Board Training Programme

In 2018/19 the Board secured a 12 month external funding bid to employ a Safeguarding Adults Training Officer to facilitate and deliver Adult Safeguarding Basic Awareness training to Care Providers and the Faith & Voluntary Sector.

We secured further funding to extend this project in 2019/20. Through training, the Training Officer develops learners' skills and modifies attitudes which will lead to improved services in the field of adult safeguarding. The post also raises the awareness of adult safeguarding issues within the wider community, consequently promoting safer communities for adults at risk.

The training is free to delegates and overall the project has trained a total of 2247 individuals, 1002 of which were trained during 2019/20. Unfortunately, the project had to pause face to face training sessions in March 2020 due to Covid-19 retractions but the use of online conference facilities and e-learning will be explored for the interim until government guidelines permit full training sessions to commence again.



Hate Crime Awareness Week



Hate crime is any criminal offence which is perceived, by the victim or any other person, to be motivated by hostility or prejudice based on a personal characteristic. The week of action took place between the 12th – 19th October 2019. It brought people together, to stand with those affected by hate crime'. Hate crime can take many forms including:

- Physical attacks - such as physical assault, damage to property, offensive graffiti, arson.
- Threat of attack - including offensive letters, abusive or obscene telephone calls, malicious complaints.
- Verbal abuse or insults - offensive leaflets and posters, abusive gestures etc.

Board members took the opportunity to share their support throughout the week by joining in with a national social media campaign and by pledging their commitment at the October Board meeting

10 Year Celebration!

CESAB was formed in 2009, at the October 2019 meeting partners celebrated the Board reaching its 10 year milestone.

The Board has faced several challenges over this period and seen lots of changes, the key one being in April 1st, 2015, when the No Secrets 2000 guidance was replaced by Section 42-46 of the Care Act 2014. This placed the board on a statutory footing and ensures all partners focus on Making Safeguarding Personal.



OFFICIAL

The Service User Group Spoken Word Project



The Cheshire East Service User Group are keen to ensure that the group is diverse and representative of adults in Cheshire East, during 2019/20 they wanted to reach people who were least able to participate in the group and worked with a care home in Nantwich.

A professional poet ran sessions with the staff and residents in the care home setting, together they put pen to paper and created their own Spoken Word Piece about their experiences of living in a Care Home. They made their Spoken Word into a video which is now used in training sessions

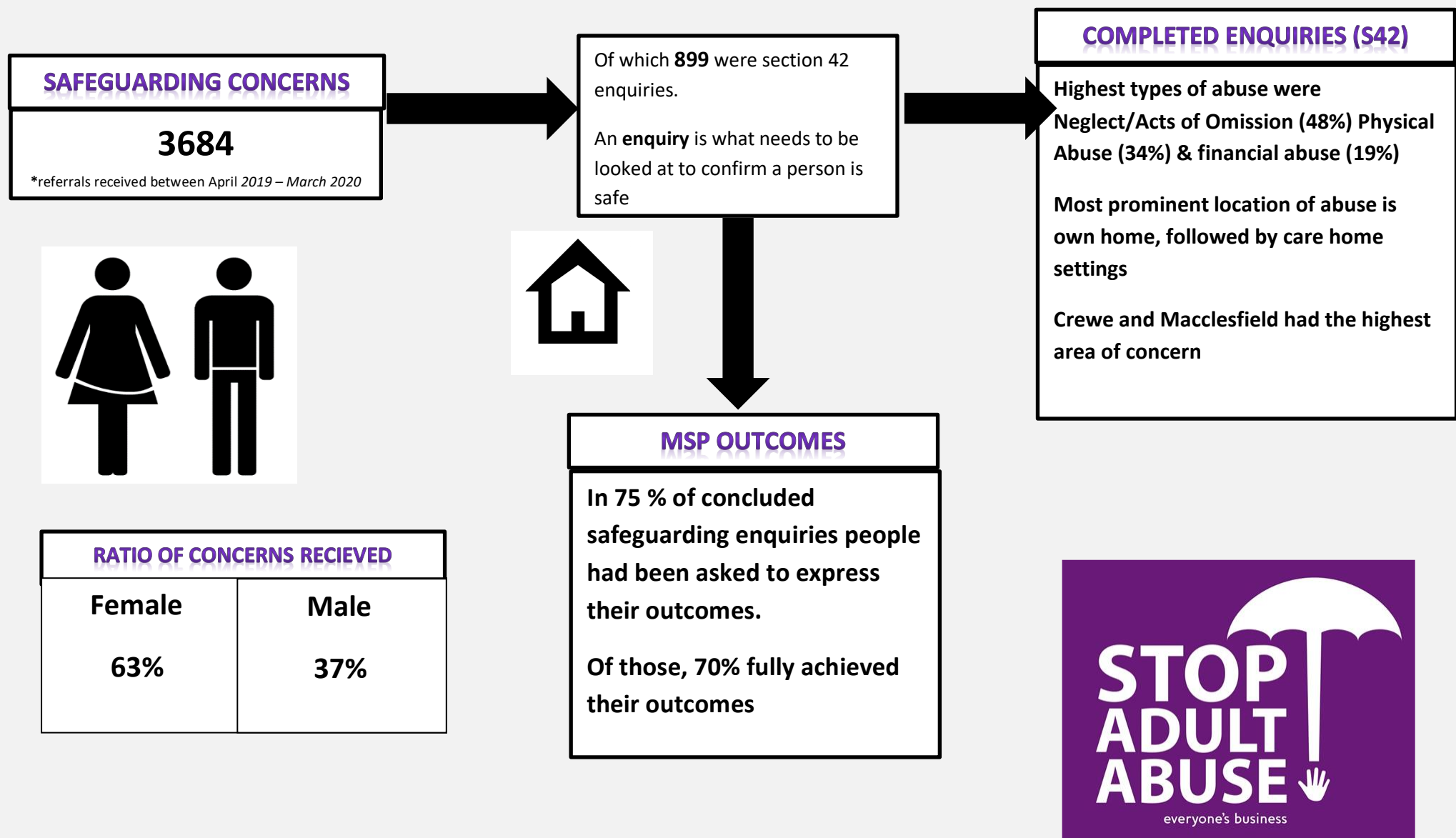
Joint Frontline Visits

In January 2020 Board members from both CESAB and the Cheshire East Children's Safeguarding Partnership completed a series of frontline visits to partner settings, this was to gain assurance that the safeguarding procedures in Cheshire East are robust and whether frontline Safeguarding practitioners receive enough support for them to carry out their job effectively. From our meetings with frontline workers we have discovered that both adults and children's practitioners are extremely dedicated and hardworking. The visits highlighted that the safeguarding procedures for both children's and adults in Cheshire East are, overall, robust, and that frontline workers do receive a lot of support. However, the visits have identified some areas for improvement, for CESAB this largely focusses on Children's practitioners developing their knowledge of Making Safeguarding Personal, all future Adult Safeguarding e-bulletins will now be shared across both adults and children's workforce. Both CESC and CESAB need to further promote their escalation policies, CESAB have agreed to review its constitution document including its escalation protocol during 2020/21



Further frontline visits will be scheduled for October/November 2020, these being dependant on the Covid-19 working practices at the time.

Performance and Activity Information 2019-2020



Next Steps – CESAB priorities for 2020/21

The Board held a Development Day in October focussing on the Board's three year Strategic Plan and the work it had achieved to date. The findings of these discussions, plus consultation with our Service User Group, helped to identify key areas for the Board to consider as part of its setting of priorities for 2020/21. However, as CESAB's Development Day and forward plan was originally produced pre-Covid-19, The Independent Chair and Statutory Partners took the decision on 01/05/20 to revise the priorities for 2020/21 in response to the pandemic as business is unlikely to return to pre Covid-19 activity for some time

CESAB understand that It is inevitable that organisations will be impacted by COVID-19, The revised priorities will provide assurance that the SAB, both as a whole and as individual agencies, are working hard together in order to keep adults at risk safe throughout the COVID-19 pandemic and during its recovery stage

The Board will do this by focusing on the 5 priorities below –

	Business Priority April 2020 - March 2021	Action/Measure
Priority 1	SAB Functioning during Covid-19	CESAB will demonstrate that its core legal duties (i.e. Care Act Compliant, SAR processes, Annual Report) are achieved during the pandemic and where appropriate post Covid-19.
Priority 2	Making Safeguarding Personal approaches continue throughout the COVID-19 pandemic	We will seek assurances from all partner organisations that Service User involvement and the principles of Making Safeguarding Personal (MSP) continue to be embedded in their Safeguarding activities during the pandemic
Priority 3	Cross-cutting themes during Covid-19	The Board will demonstrate assurance that emerging cross-cutting themes that may have an impact on adult Safeguarding throughout Covid-19 are responded to and fully addressed. There are a number of areas, such as Contextual Safeguarding, which cross between adult safeguarding, children's safeguarding and community safety and the Board will seek assurance that the issues are being managed at the right place and updates brought to each respective Board
Priority 4	Safe Services throughout the COVID-19 pandemic	We will seek assurance that care providers, the care workforce, unpaid carers, and Board partner agencies are supported in their ongoing hard work to maintain services, and that services provided are high quality and safe throughout the pandemic.
Priority 5	Promoting Positive Practice	The Board will recognise outstanding practice by organisations in Cheshire East during the Covid-19 Pandemic by holding an awards ceremony (following latest Social Distancing Guidance) in Winter 2020/Spring 2021

**What do you do if a bad thing is happening to you or someone else?
Abuse is wrong. Tell someone**

**Call Cheshire East Adult Social
Care**

0300 123 5010 (8.30am - 5pm)
0300 123 5022 (at all other times)



**If you are hearing or
speech
impaired, you can
use Text Relay**



**If you are scared, tell
someone you trust,
who can report it for
you**



This page is intentionally left blank



STANDARDISED CHAIR'S REPORT

CHAIR'S REPORT DETAILS	
Name of meeting:	Cheshire East Health and Wellbeing Board
Chair of meeting:	Sheena Cumiskey
Executive Director	Denise Frodsham
Date of meeting:	24/11/2020

Quality, clinical, care, other risks identified that require escalation:	
(ESCALATION)	<p>None for escalation</p> <p>Areas of risk discussed by CE ICP Board;</p> <ul style="list-style-type: none"> How the ICP can provide further enhanced support and leadership in the COVID context by providing shared communication and enhanced visibility. Future devolution of commissioning to ICPs requires significant programme of work and sufficient transfer of CCG resource to develop proposals and implementation options for ICP transfer within short timeframe

Matters discussed:	
(ASSURANCE)	<ul style="list-style-type: none"> Children's Transformation Progress Update HCP development of ICP Network across Cheshire and Merseyside CCG Presentation on Approach to Commissioning Integrated Care Partnerships COVID response by ICP ICP Board Development planning for December 2020 PLACE time out session, reflecting and reaffirming the needs from a population/health perspective and how we work together to achieve that.

Achievements:	
(ACHIEVEMENT)	<ul style="list-style-type: none"> Transformation Progress <ul style="list-style-type: none"> All key theme programmes now established as well as BI / Digital Transformation Delivery Group established and agreed membership and Terms of Reference complete New models of Care - Children's services presentation confirmed good progress with hubs in two locations (Crewe and Macclesfield) and integrated working across all health and care providers CCG Presentation – Commissioning with Integrated Care Partnerships, evidenced trust and relationships between ICP and CCG with direction of intent to devolve tactical commissioning (noting risk and work programme to take this forward) HCP response to CEICP network report – very well received, requested to give a more formal update on ICP progress to next meeting but positive feedback of system integration and positive culture.

This page is intentionally left blank



HEALTH AND WELLBEING BOARD

Date of Meeting: 24 November 2020

Report Title: Cheshire East Place Partnership update

Author: Claire Heaney, Cheshire East Place Programme Director

H&WB Lead Steven Michael

1. Introduction and Policy Context

- 1.1. Within the Cheshire East Partnership Five Year Plan 2019-2024, our vision *"to enable people to live well for longer; to live independently and to enjoy the place where they live"* is captured alongside our focus, key strategic goals, with reference to wider determinants of health, why we need to change and expected outcomes.
- 1.2. Since April 2020, despite being immersed in the Covid-19 emergency response measures, Partnership working across Cheshire East Place has continued and has strengthened to enable progress in a number of key areas these being around:
 - Commissioning Intentions
 - Financial Recovery Plan
 - Health and Care Services Redesign
 - Integrated Care Partnership (including Care Communities)
 - Wider enabling workstreams including Digital and Workforce
- 1.3. Therefore, this report is designed to inform the Board of progress made, key challenges still prevailing and plans to address moving forward.

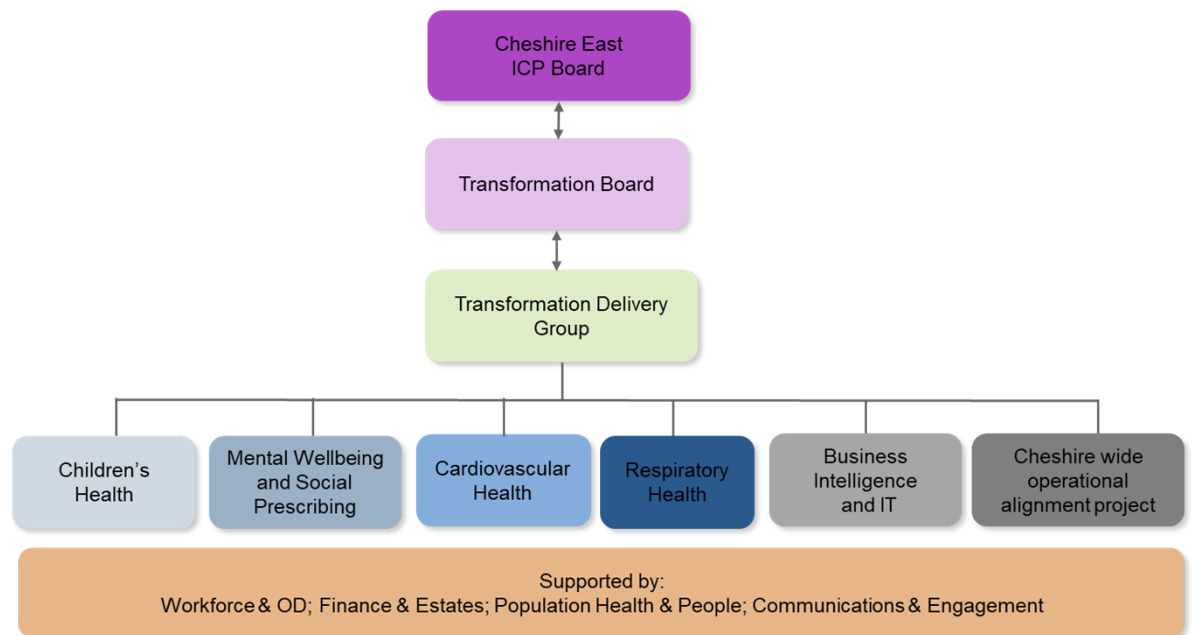
2. Background

- 2.1. Within the Place Five Year Plan 2019 - 2024, we have articulated four key goals around development and delivery of a sustainable, integrated health and care system, which is financially balanced, supported by a sustainable workforce and significantly reduces health inequalities. A short update on the key elements enabling us to achieve this is summarised below:

3. Briefing Information

- 3.1. NHS Cheshire Clinical Commissioning Group has recently presented its approach around evolving strategic and tactical commissioning to Cheshire East Integrated Care Partnership (CEICP). Key elements emerging from devolving responsibility include changes to contracting mechanisms and impact on budgets, financial frameworks and resources; Population Health and Performance outcome frameworks and measures; clarity on functions and Governance arrangements; necessary Business Intelligence requirements and Communications and Engagement in place.
- 3.2. To address the underlying financial deficit across the Cheshire wide NHS System, work has continued on the pan-Cheshire Financial Recovery Plan with emphasis specifically on Collaboration at Scale programmes of work designed to generate greater efficiencies and value for money from a broader geographical footprint and organisations working on solutions together, these being Workforce, Procurement, Estates and Facilities, and Medicines Optimisation.
- 3.3. Work progressed on the Health and Care Services Redesign Programme with a combination of Clinical Workshops and Patient Focus Groups held during September and October to generate the draft proposals for the New Model of Care. This current phase of work will be completed on 09/11/2020 when the outcomes will be shared with respective Partners. At this stage, guidance is awaited from NHS England / Improvement on the future direction of travel and any available funding.
- 3.4. At the heart of the Place Transformation programme is the establishment of the Integrated Care Partnership and development of our eight Care Communities to provide the foundation for innovation and focus on meeting the needs of our local populations. The Governance arrangements have now been approved with the respective forum now mobilised and work commenced on the four key target areas: Cardiovascular Health, Children's Health, Mental Wellbeing and Social Prescribing and Respiratory Health. Two additional areas of focus have been highlighted in respect of Business Intelligence and IT, and Cheshire-wide operational alignment project. *(Governance Structure is shown below:-)*

Cheshire East ICP Governance Structure



Source: Cheshire East ICP Terms of Reference

- 3.5.** Work on the wider enabling workstreams has continued with the focus of Workforce & OD being on ensuring that the actions emerging from the cultural work supporting the development of the eight Care Communities across Cheshire East are successfully completed. In addition, Covid-19 has highlighted the importance of Digital in enabling us to work and operate differently. The focus remains on ensuring that the systems, tools and technology at our disposal are fit for purpose to deliver the services we need for the population of Cheshire East.

4. Implications

There are a number of implications due to the integration of health and care services. However, under the revised Governance arrangements, there is a clear line of sight up through Cheshire East Place Partnership Board to the Cheshire East Health and Wellbeing Board (CEHWBBd), with the Independent Chair of the Partnership Board now attending CEHWBBd enabling full visibility of Commissioning Intentions, and progress in respect of achievement of the Place 5 Year Plan.

This page is intentionally left blank